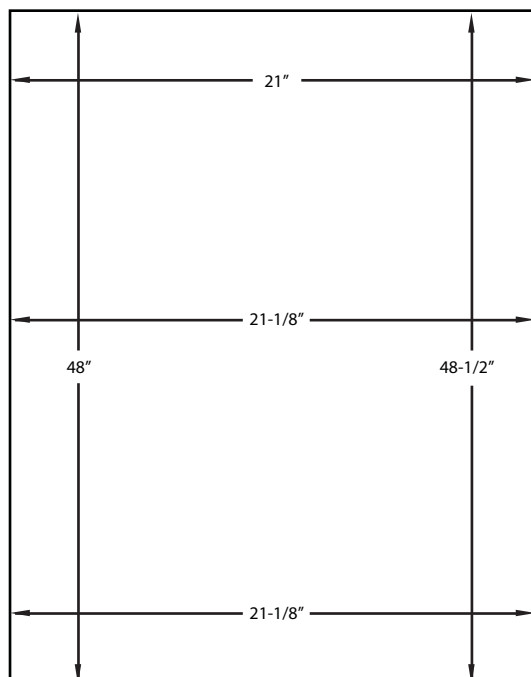


## Roll-Away Window Screen Measuring Instructions

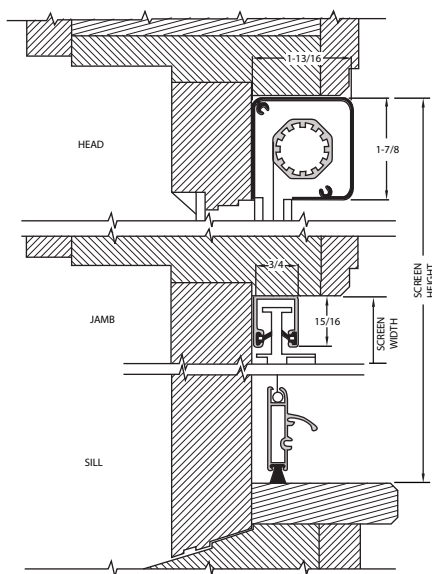


**Diagram A**

Window frames will sometimes vary from side to side (width) and from top to bottom (height). When measuring the inside dimensions of the frame in which the Roll-Away® screen will fit, be sure to measure the width of each frame at the top, middle, and bottom. For each height measurement measure at the left and right side of each frame opening (See diagram A). Measure to the nearest 1/16". When ordering always use the smallest of each dimension.

**EXAMPLE:** In diagram "A" the measurements you should record would be 21" x 48", as 21" is the smallest width and 48" is the smallest height. A 1/16" deduction in width and height dimensions are necessary for a proper fit. Therefore, we would manufacture your Roll-Away® screen to measure 20-15/16" x 47-15/16". In order to arrive at the list price go to the next largest size: 24" x 48".

As Roll-Away® Window screens must always be installed square to operate properly, shimming with wood shims, foam, tape, or silicone may be necessary to facilitate a proper fit.



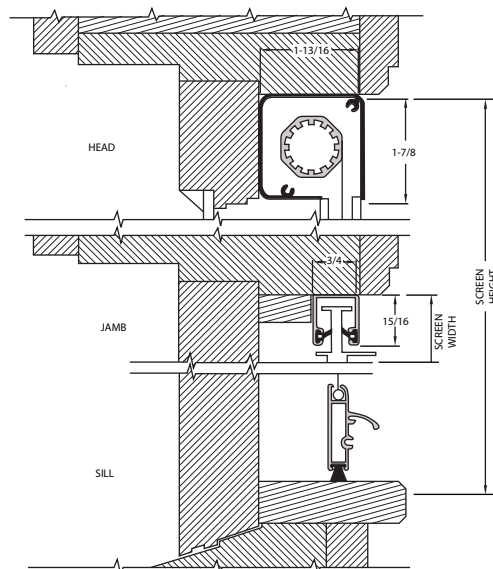
**Diagram B**

R40 Series Standard Drawbar

Two different installation styles are available for Roll-Away® Window screens. The way to distinguish between the two is as follows:

1. If the canopy or housing containing the screen projects out in front of the guides (or towards the inside of the window) it is standard style (See Diagram B).
2. If the canopy projects behind the guides (or towards the outside of the window) it is a reverse style (See Diagram C).

*R40/R41 Series details shown for reference. Series R20/R21 Window Screens are installed using the same method as noted above.*



**Diagram C**

R41 Series Reverse Drawbar